



Independent STAMPIN' UP! demonstrator

## Color Coach Challenge



**ELIZABETH MARTINEZ**

**Phone:** 480-784-7662 **Email:** elizabeth@purtypartay.com

Find me on Facebook & Instagram as @purtypartay

[www.purtypartay.com](http://www.purtypartay.com)

### Join the Weekly Color Challenge!

Each week, I'll be selecting a new combo from the Color Coach to spark your creativity—follow along on Instagram and Facebook @PurtyParTAY to see the featured colors and my project for the week. Want to play too? Use **#purtycolorchallenge** and **tag me in your post** so I can see what you make! I can't wait to cheer you on and share your colorful creations!



# Color Challenge Box Instructions

Create a sturdy and stylish storage box for your Color Coach cards—perfect for organizing and inspiring your weekly color challenge!



## What You'll Need:

- Cardstock (for the box + backing pieces in each color)
- Designer Series Paper (DSP)
- [Printable Color Coach PDF](#)
- Circle Punch (½" recommended)
- Adhesive
- Ribbon & embellishments (optional but encouraged!)



## Color Challenge Box Instructions

Create a sturdy and stylish storage box for your Color Coach cards—perfect for organizing and inspiring your weekly color challenge!



## Box Construction

Start with a piece of cardstock that is 6½" wide by 6" tall.



### Scoring:

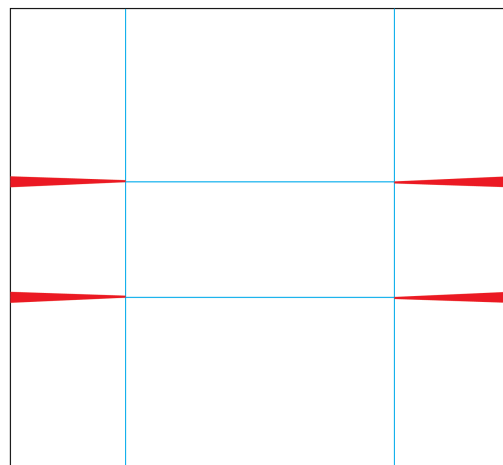
1. **Score 1½" in from each side** along the **6" (tall) side**.
2. Rotate the cardstock so the **6½" side is horizontal**.
3. **Score 2¼" in from the left** and **2¼" in from the right**.



### Cutting:

With the 6½" side at the top:

- Trim and **notch the center flaps** (red sections in template) slightly at an angle. These will be tucked *between* the front and back panels.
- **Do not cut away the outer flaps**—they form the front and back walls of the box.



This construction keeps the inside clean so your Color Coach cards **won't catch on inner tabs**.



### Assembly:

1. Fold along all score lines.
2. Apply adhesive to the notched center flaps.
3. Tuck and glue them **between** the front and back panels for a clean finish.
4. Finished size: **3½" wide x 1¾" tall**

## **Decorating Your Box:**

To wrap and embellish:

1. Cut a piece of **DSP to 12" x 2¼"**.
2. Score at ½" **along the 12" side** and fold it back—this lets the **B-side of your DSP peek out on the front**.
3. Wrap the DSP strip around your assembled box and adhere it in place.
4. Finish with **ribbon, die cuts, tags, or bling** to coordinate with your chosen color combo or DSP pattern.

This adds a beautiful, personalized touch, making your Color Challenge Box something you'll love to reach for every week.

---

## **Box Base:**

To add stability, cut **two pieces of cardstock to 4" x 2¼"** and glue them together. Adhere your assembled box to the base.

---

## **Creating the Color Coach Card Inserts**

Let's get your Color Coach Cards ready so you can start crafting with confidence!

### **Steps:**

1. **Print the Color Coach PDF** from the link at the top of this tutorial using a **color printer**.  
→ For best results, print on **standard paper** rather than cardstock. If you use cardstock, your finished cards may be too thick to fit comfortably in the box.
2. **Trim each swatch to 3" x 3⅜"**.
3. Cut a piece of **matching cardstock** for each swatch.  
→ Backing size: **3¼" x 3⅝"**
4. **Adhere to each Color Coach to its coordinating cardstock base.**
5. *(Optional but highly recommended!)*  
Use a ½" **Circle Punch** to punch out cardstock in each of the three coordinating colors listed on the swatch.  
→ Adhere these circles over the printed dots on the card to give a more accurate (and extra cute) visual of the actual Stampin' Up! colors.

This little extra step adds a fun, finished look and makes the colors pop!