



Independent STAMPIN' UP! demonstrator

# Jolly Delivery - Secret Flip Delivery

December 2025



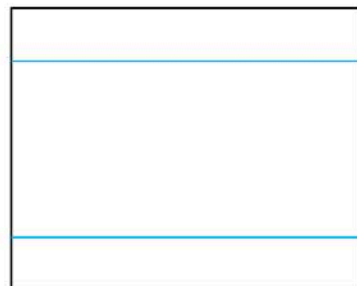
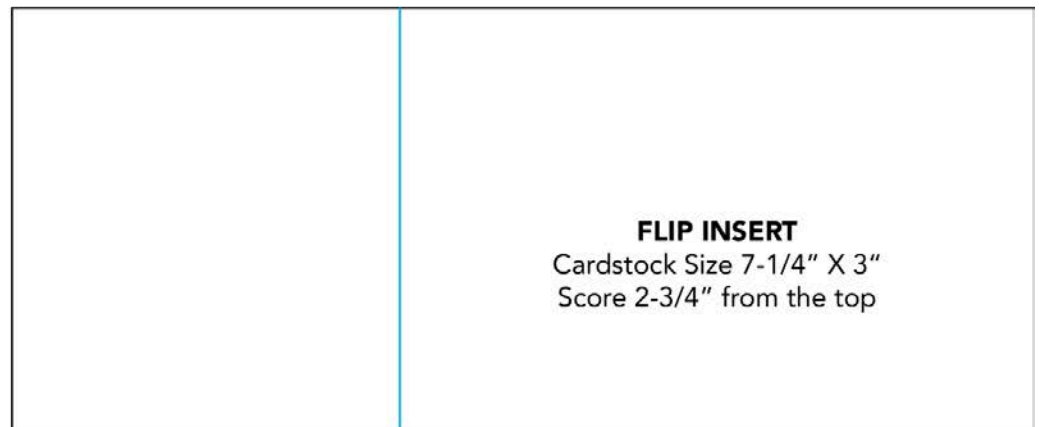
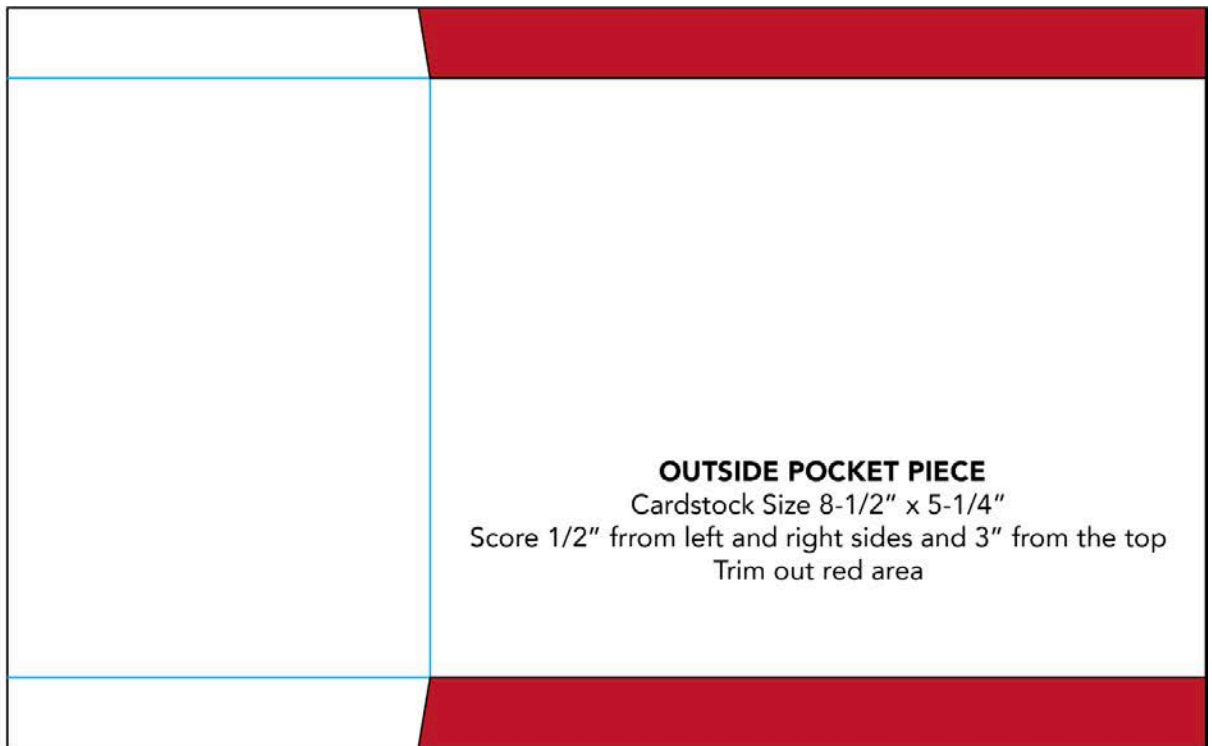
**ELIZABETH MARTINEZ**

**Email:** [elizabeth@purtypartay.com](mailto:elizabeth@purtypartay.com)

Find me on YouTube, TikTok, Facebook & Instagram as @purtypartay

[www.purtypartay.com](http://www.purtypartay.com)

# Secret Flip Delivery Diagram



**FLIP MECHANISIM**  
Cardstock Size 2-1/2" x 2"  
with the piece wide, score 3/8" from the  
top and the bottom"

# Jolly Delivery Secret Flip



## Cutting Dimensions

PAPER / ELEMENT	Size	Instructions
<b>Crumb Cake Cardstock</b> Outside Pocket Piece Secret Flip Insert Inside Flip Greeting Flip Mechanism Rectangle - front embellishment	8-½" x 5-¼" 7-¼" x 3" 2-¾" x 2-¼" 2-½" x 2" scrap	Score, Trim, and Fold per diagram Score & Embellish as shown Stamp & Embellish with Die Cuts as shown Score and fold per diagram Die-cut the 2nd largest Nested Essential Rectangle
<b>Pool Party Cardstock</b> Die-cut Banner (largest) Die-cut Banner (smallest)	scrap scrap	Die-cut the largest Nested Essential Banner Die-cut the smallest Nested Essential Banner
<b>Jolly Delivery Designer Paper</b> Flip Insert - Top Flap Outside Flip Insert - Top Flap Inside Flip Insert - Bottom Flap Inside Outside Pocket - Top Outside Pocket - Bottom	2-¾" x 2-½" 2-¾" x 2-½" 2-¾" x 4-¼" 4" x 2-¾" 4" x 2-¾"	



# Step-by-Step Assembly

## Before You Begin

All cardstock and Designer Series Paper pieces are cut and scored per the cutting diagram. All stamping is completed using Jolly Delivery and Tuxedo Black Memento Ink. Die cuts are softly edged with the Ivory Stampin' Blend. The front focal element is assembled using Nested Essentials dies and die cuts, and the Special Delivery greeting is set aside.

- 1. Prep the focal element** - Finish assembling the focal image if needed and set aside.
- 2. Prep the pocket piece** - Adhere Designer Series Paper to the front of the top flap on the inside and to the bottom panel of the pocket piece. Apply Tear & Tape to the pocket flaps, but do not assemble yet. Set aside.
- 3. Assemble the flip insert** - Adhere Designer Series Paper to the flip insert panels. Add the stamped greeting using the coordinating die cut. Attach the pull tab using the small banner tab from Nested Essentials. Punch a hole through the tab and insert the base, thread the ribbon through, and secure.
- 4. Prep the flip mechanism** - Apply Tear & Tape to the flip mechanism and fold along the score lines so it forms a Z fold.
- 5. Attach the flip mechanism** - With the flip insert facing up, place the score fold down and align the edge of the flip mechanism to the top fold of the flip insert. Center it left to right and keep the top edge flush with the fold. Adhere.



- 6. Dry fit** - Place the flip insert into the pocket piece without adhesive. The top flap of the outside pocket piece should fold down and align with the bottom of the top flap on the flip insert. If aligned, continue.

**7. Final pocket assembly** - Adhere the remaining flap to the inside back of the outside pocket top flap as shown in the video. Adhere the side tabs of the pocket piece, then gently pull and push the insert to loosen the cardstock so it moves freely.

**8. Finish**- Attach the front focal element with Dimensionals and add embellishments as desired.